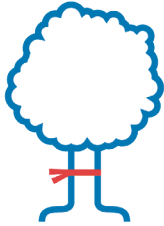


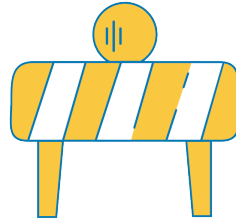
Preparing for Construction



Tree Removal

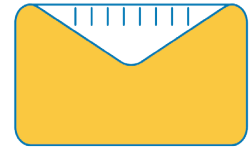
Great effort was made to save existing trees where possible. A few reasons a tree will be removed are:

- Ash species threatened by the Emerald Ash Borer.
- Located within grading area for improvements and utility work.
- Located too close to a street light
- Located too close to a water or sewer service
- Located too close to a fire hydrant



Street Closure

Anticipate that you will NOT have direct access to your driveway for two to three months.



Mail

Temporary mailboxes will be provided in your neighborhood during construction.



Water/Sewer

You will be given advanced notice for temporary water outages. No sanitary sewer interruptions are anticipated.



Parking

It will be necessary to park on side streets and walk to your property across adjacent lawns. Please be a good neighbor.

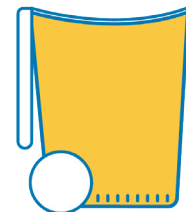
Construction of this nature means you will experience inconveniences.

This is an important project that will bring needed improvements to our community.



Be Prepared

Prepare for rain and slippery conditions. Pack your shoes and umbrella and wear a pair of boots or galoshes.



Garbage

Please contact your garbage service provider for information on continued services during construction.

Please don't hesitate to reach out with any questions or special accommodations.